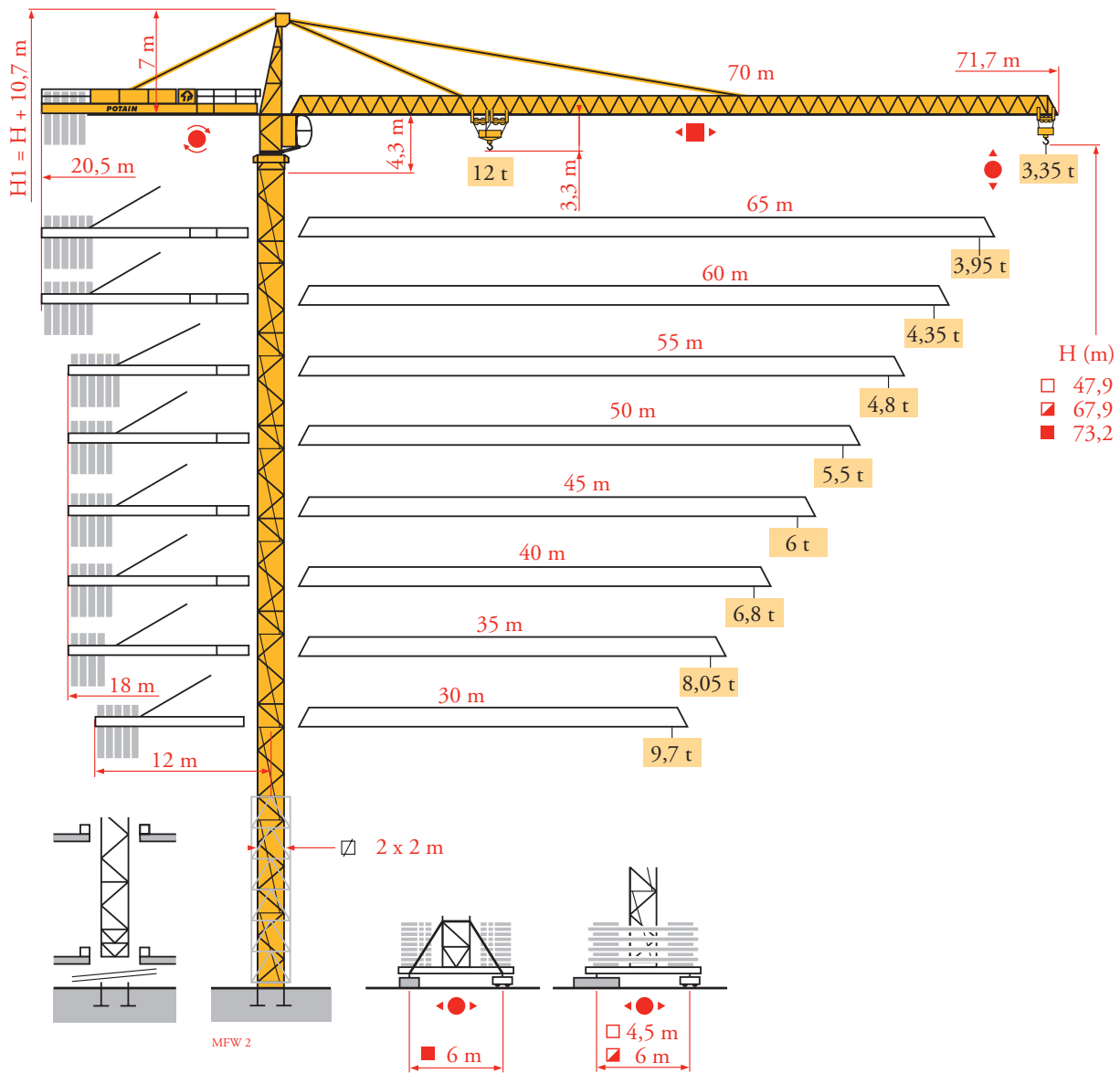


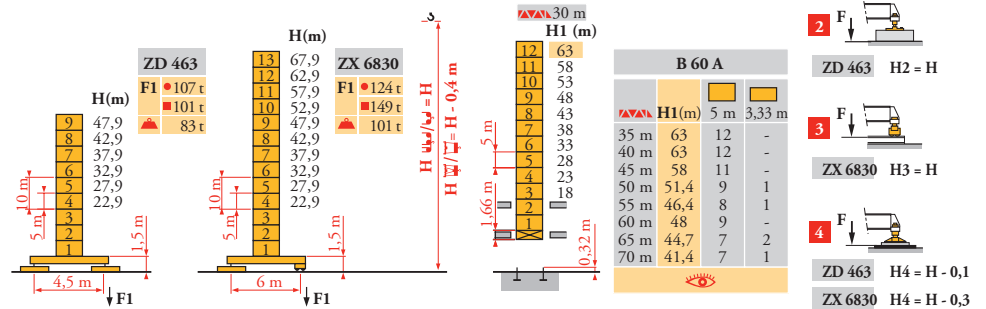
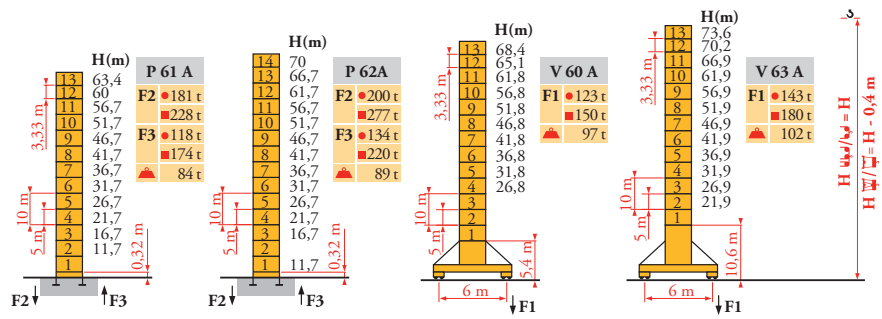
# Potain MD 310C K12



Mat / Réactions  
 Maste / Eckdrücke  
 Masts / Reactions  
 Mástil / Reacciones  
 Torre / Reazioni  
 Tramo / Reacções  
 Композиции башни /  
 Реакции

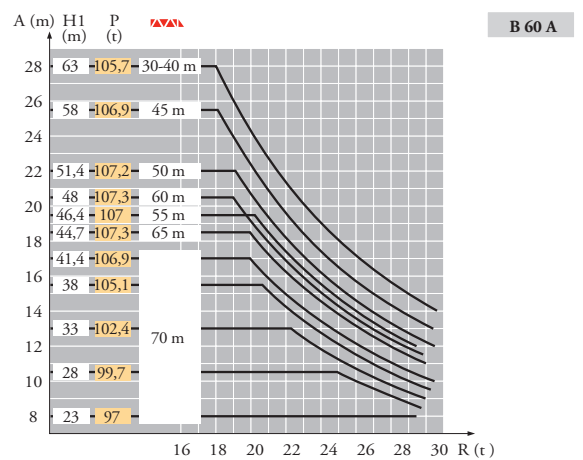
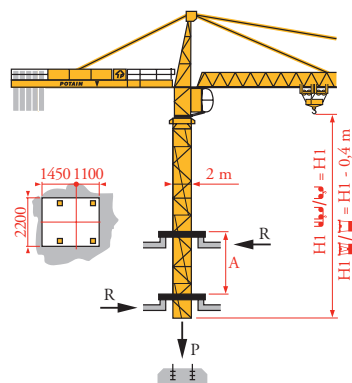
MFW 2

2 m  
 30 m → 70 m



Télescopage sur dalles  
 Kletterkrane im Gebäude  
 Climbing crane  
 Telescopage gruas  
 trepadoras  
 Gru in cavedio  
 Telescopagem sobre lages  
 Кран, ползущий внутри  
 здания

MFW 2







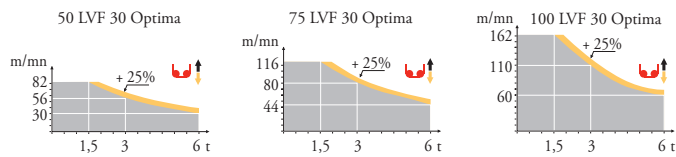
- |   |  |  |  |   |   |  |
|---|--|--|--|---|---|--|
| <b>FR</b>   | <b>DE</b>  | <b>EN</b>  | <b>ES</b>  | <b>IT</b>   | <b>PT</b>   | <b>RU</b>  |
| ● Réactions en service  | ● Reaktionskräfte in Betrieb   | ● Reactions in service   | ● Reacciones en servicio   | ● Reazioni in servizio  | ● Reacções em serviço   | ● Реакции при работе   |
| ■ Réactions hors service  | ■ Reaktionskräfte außer Betrieb  | ■ Reactions out of service   | ■ Reacciones fuera de servicio   | ■ Reazioni fuori servizio   | ■ Reacções fora de serviço  | ■ Реакции в покое  |
| 📏 A vide sans lest (ni train de transport) avec flèche et hauteur maximum | 📏 Ohne Last, Ballast (und Transportachse), mit Maximalausleger und Maximalhöhe | 📏 Without load, ballast (or transport axes), with maximum jib and maximum height | 📏 Sin carga, sin lastre, (ni tren de transporte), flecha y altura máxima | 📏 A vuoto, senza zavorra (ne assali di trasporto) con braccio massimo e altezza massima | 📏 Sem carga (nem trem de transporte)- sem lastro com lança e altura máximas | 📏 Вес без груза, балласта (или транспортных осей), с максимальной длиной стрелы и максимальной высотой |
| 📞 Nous consulter  | 📞 Auf Anfrage  | 📞 Consult us   | 📞 Consultarnos   | 📞 Consultateci  | 📞 Consultar-nos   | 📞 Проконсультируйтесь у нас  |




Mécanismes  
Antriebe  
Mechanisms  
Mecanismos  
Meccanismi  
Mecanismos  
Механизмы

MPW 2

		↑↑						↑↑↑						ch - PS hp	kW		
↑	50 LVF 30 Optima	m/min	2,6	→ 10	→ 30	→ 40	→ 56	→ 82	1,3	→ 5	→ 15	→ 20	→ 28	→ 41	50	37	337 m
		t	6	6	6	4,5	3	1,5	12	12	12	9	6	3			
	75 LVF 30 Optima	m/min	3,8	→	44	→ 56	→ 80	→ 116	1,9	→	22	→ 28	→ 40	→ 58	75	55	766 m
		t	6		4,5	3	1,5		12		9	6	3				
↑	100 LVF 30 Optima	m/min	0	→	60	→ 80	→ 110	→ 162	0	→	30	→ 40	→ 55	→ 81	100	75	941 m
		t	6		4,5	3	1,5		12		9	6	3				
↑	150 LCC 30	m/min	88,4	→ 106	→ 132	→ 176	→ 212	44,2	→ 53	→ 66	→ 88	→ 106	150	110	761 m		
		t	6	4,5	3	1,5	0,75	12	9	6	3	1,5					
←→	6 DVF 4	m/min	0 → 50 (12 t) 0 → 100 (6 t) 0 → 120 (3 t)												5,5	4	
↻	RVF 162 Optima +	tr/min U/min rpm	0 → 0,7												2 x 7,5	2 x 5,5	
↻	V 60 A RT 544 A1 2V R ≥ 13 m	m/min	13,5 - 27												4 x 7	4 x 5,2	
	V 63 A																
↻	ZX 6830 RT 664 A2B 2V	m/min	16 - 32												6 x 7	6 x 5,2	
	CEI 38  IEC 38																
400 V (+6% -10%) 50 Hz		50 LVF : 75 kVA 75 LVF : 100 kVA 100 LVF : 125 kVA 150 LCC : 175 kVA															



	<b>FR</b>		<b>DE</b>		<b>EN</b>		<b>ES</b>		<b>IT</b>		<b>PT</b>		<b>RU</b>
	Levage		Heben		Hoisting		Elevación		Sollevamento		Elevação		Подъем
	Distribution		Katzfahren		Trolleying		Distribución		Distribuzione		Distribuição		Перемещение каретки
	Orientation		Schwenken		Slewing		Orientación		Rotazione		Rotação		Поворот
	Translation		Kranfahren		Travelling		Traslación		Traslazione		Translação		Перемещение крана



Document commercial non contractuel. Pour toute information technique se référer à la notice correspondante.

Unverbindliches Vertriebsdokument. Für technische Informationen, siehe die entsprechenden Anweisungen.

This commercial document is not legally binding. For any technical information, please refer to the corresponding instructions.

Documento comercial no contractual. Para cualquier información técnica, ver la noticia correspondiente.

Documento commerciale non vincolante, per tutte le informazioni tecniche fare riferimento al catalogo istruzioni.

Documento comercial não contractual. Para qualquer informação técnica complementar consultar as respectivas instruções.

Этот коммерческий документ не является юридически обязательным. Для получения технической информации, см. соответствующие инструкции.



**Manitowoc - Americas - World Headquarters**  
2400 S. 44th Street • Manitowoc • WI 54220 USA  
Tel: +1 920 684 4410 • Fax: +1 920 652 9778

**Manitowoc - Europe, Middle East & Africa**  
Manitowoc France SAS  
18, rue de Charbonnières B.P. 173 • 69132 ECULLY Cedex • FRANCE  
Tel: +33 (0)4 72 18 20 20 • Fax: +33 (0)4 72 18 20 00

**Manitowoc - Asia Pacific**  
16F Xu Hui Yuan Building,  
1089 Zhongshan No.2 Road (S) • Shanghai 200030 China  
Tel: +86 21 6457 0066 • Fax: +86 21 6457 4955